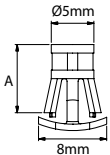




PUSH SPACER SUPPORT POSTS

RLCBSB

Metric Reverse Lock Circuit Board Support Push Spacer

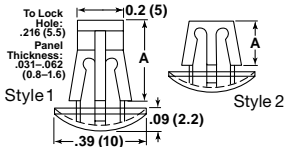


Bottom Hole:
Snap-lock: 5.5mm
Panel Thickness:
.05mm - 1mm

- Mounts from the outside of the chassis
- Material: Nylon 6/6
- Color: Natural
- Flame Class: UL94 V-2

Item No.	A		Bulk Pack Qty.
	mm		
RLCBSB-5-01	5		1000
RLCBSB-6-01	6		1000
RLCBSB-8-01	8		1000
RLCBSB-10-01	10		1000
RLCBSB-12-01	12		1000
RLCBSB-14-01	14		1000

CBRLSS Series Reverse Locking Spacers



Specifications:

- Material: Nylon 6/6
- Color: Natural
- Flame Class: UL94 V-2

Features:

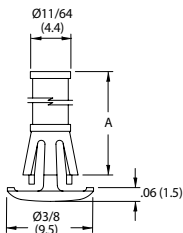
- Supports heavily loaded circuit boards
- Inserted from the chassis underside
- No fasteners required for mounting due to the one piece design

Item No.	A		Style	Bulk Pack Qty.
	In	mm		
CBRLSS005A	0.138	3.5	2	1000
CBRLSS010A	0.197	5.0	2	1000
CBRLSS015A	0.250	6.4	1	1000
CBRLSS020A	0.276	7.0	1	1000
CBRLSS025A	0.312	7.9	1	1000
CBRLSS030A	0.335	8.5	1	1000
CBRLSS035A	0.394	10.0	1	1000
CBRLSS040A	0.472	12.0	1	1000
CBRLSS045A	0.500	12.7	1	1000
CBRLSS050A	0.531	13.5	1	1000

Item No.	A		Style	Bulk Pack Qty.
	In	mm		
CBRLSS055A	0.551	14.0	1	1000
CBRLSS060A	0.598	15.2	1	1000
CBRLSS065A	0.625	15.9	1	1000
CBRLSS070A	0.709	18.0	1	1000
CBRLSS075A	0.750	19.1	1	1000
CBRLSS080A	0.787	20.0	1	1000
CBRLSS085A	0.854	21.7	1	500
CBRLSS090A	0.945	24.0	1	500
CBRLSS095A	1.000	25.4	1	500
CBRLSS100A	1.181	30.0	1	500

RLCBSRS

Reverse Locking Circuit Board Support



Bottom Hole:
Snap-lock: .187 (4.75)
Panel Thickness:
.059 - .063 (1.5 - 1.6)

- Supports heavily loaded PC boards
- Minimal protrusion under the board
- Inserted from the outside of the chassis
- Material: UL94 Nylon 6/6
- Color: Natural
- Flame Class: UL94 V-2

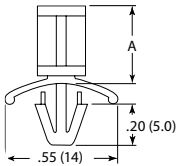
Item No.	A		Bulk Pack Qty.
	In	mm	
RLCBSRS-4-01	1/4 (6.4)		1000
RLCBSRS-5-01	5/16 (7.9)		1000
RLCBSRS-6-01	3/8 (9.5)		1000
RLCBSRS-7-01	7/16 (11.1)		1000
RLCBSRS-8-01	1/2 (12.7)		1000
RLCBSRS-9-01	9/16 (14.3)		1000
RLCBSRS-10-01	5/8 (15.9)		1000

PS/CBPS Series Push Spacer



Specifications:

- Material: Nylon 6/6
- Color: Natural
- Flame Class: UL94 V-2

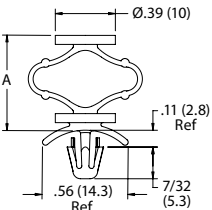


To Lock in Hole:
.187 (4.8)
Panel Thickness:
.031 - .078 (0.8 - 2.0)

Item No.	UL94 V-2	A		Bulk Pack Qty.
		In	mm	
CBPS005A	-	0.138	3.5	1000
PS-3-01	PS-3-19	0.188	4.8	1000
CBPS015A	-	0.236	6.0	1000
PS-4-01	PS-4-19	0.250	6.4	1000
PS-6-01	PS-6-19	0.375	9.5	1000
PS-7-01	PS-7-19	0.500	12.7	1000
PS-8-01	PS-8-19	0.563	14.3	1000
PS-10-01	PS-10-19	0.625	15.9	1000
PS-12-01	PS-12-19	0.750	19.1	1000
PS-14-01	PS-14-19	0.875	22.2	1000
CBPS060A	-	0.945	24.0	1000
CBPS065A	-	1.000	25.4	1000
CBPS070A	-	1.125	28.6	500
CBPS075A	-	1.250	31.8	500
CBPS080A	-	1.375	34.9	500

PSC

Push Spacer with Cushion



Bottom Hole:
Snap-lock: .187 (4.75)
Panel Thickness:
.031 - .078 (0.79 - 1.98)

- Flexible spring spacer absorbs vibration and shock
- Mounts to chassis and supports the PC board
- Material: UL94 HB Impact Modified Nylon 6/6, UV Stabilized
- Color: Natural

Item No.	A Spacer		Bulk Pack Qty.
	Length Uncompressed		
PSC-1	3/8 (9.5)		1000
PSC-2	1/2 (12.7)		1000
PSC-3	5/8 (15.9)		1000
PSC-4	3/4 (19.1)		1000